

FSU 2003 FRESHMEN

CIRP SURVEY RESULTS



Prepared by Research Staff in the Division of Student Affairs
Publication SUR 04-01

PROFILE OF THE 2003 FSU (FIRST-TIME /FULL-TIME)
ENTERING FRESHMAN CLASS

CIRP RESULTS 2003

TABLE OF CONTENTS	
	PAGE
Report Abstract	3
Background	3
Survey Results	4
Demographic Information	5
Biographical Information	6
Education and Financial Information	8
Interest and Beliefs	10
Wellness	12
Fitness	14
Alcohol and Tobacco Use	15
Conclusion	16
Appendices – available upon request	
Survey Instrument	Appendix A
Additional Questions	Appendix B
Summary of Responses for First-time Full-time Students	Appendix C
Summary of Responses for other than First-time Full-time Students	Appendix D

Note: The appendices are available in a separate publication. This report is available in alternative format.

Profile of the 2003 FSU (First-Time /Full-Time) Entering Freshman Class

Report Abstract

The majority (66 percent) of the 2003 FSU freshmen are 18 years of age, while 32 percent are 19 years of age; the age pattern closely reflects the national norm. Nationally, 67 percent are 18 years of age while 30 percent are 19 years of age. The FSU 2003 freshman class is 81 percent White/Caucasian; in 2002, it was 78 percent White/Caucasian. The 2003 national trend is 75 percent White/Caucasian. The FSU freshman class has the same percent of African American/Black freshmen as the national norm of 7 percent. The predominant religion is Catholicism – 28 percent of FSU freshmen reported they are Catholic compared to 27 percent nationally. Academically, the majority (97 percent) of FSU freshmen reported a high school grade point average of “B” or better compared to 92 percent nationally. Exercise and fitness are important activities to FSU freshmen since 49 percent of FSU freshmen reported exercising or playing sports 6 hours or more per week compared to 50 percent nationally.

Background

Florida State University participates in an annual longitudinal study of incoming freshmen conducted jointly by the American Council on Education and University of California, Los Angeles (UCLA). The Cooperative Institutional Research Program (CIRP) collects self-reported information (biographic, demographic, educational, financial, opinions, etc.) from freshman students. In 2003, the number of entering FSU freshmen (first-time full-time) that participated in the survey was approximately 3,700. Information is collected from freshmen in universities and colleges across the United States.¹ More information about CIRP may be obtained from Research staff in the Division of Student Affairs- Kathryn Voigt, Associate Director at 850.644.1331.

¹ Institution with high selectivity for SAT and ACT scores of the entering class.
Term definition: Univ Hi = A public university comparable to FSU.

Survey Results

Demographic Characteristics

Age

The majority (66 percent) of the 2003 FSU incoming class are 18 years of age, while 32 percent are 19 years of age; the age pattern closely reflects the national norm - 67 percent of all incoming freshmen are 18 years of age while 30 percent are 19 years of age. At FSU, the percentages were the same for the prior 2002 freshman class [see Figure 1].

Figure 1 Age of Entering Freshmen

Age	FSU 2003 (%)	FSU 2002 (%)	Univ Hi 2003 (%)	Univ Hi 2002 (%)	All Public Univ-National Norm 2003 (%)	All Public Univ-National Norm 2002 (%)
Less than 18	2	2	2	2	2	2
18	66	66	71	69	67	67
19	32	32	27	29	30	30
20 or over	< 1	< 1	< 1	< 1	1	< 1

Percentages may sum to 100.0+ due to respondents marking more than one category and/or rounding decimals.

Race/Ethnicity

The 2003 FSU freshman class has a higher percent of White/Caucasian students than the national norm- the 2003 FSU freshman class are 81 percent White/Caucasian compared to 75 percent nationwide. The percentage of this race group also increased from the prior year class - from 78 percent in 2002 to 81 percent in 2003. The percent of African American/Black 2003 FSU freshmen mirrored the 2003 national norm of 7 percent. In 2002, 9 percent of FSU freshmen reported they were African American/Black. Three (3) percent of 2003 freshmen reported they are Asian American/Asian compared to 12 percent of freshmen at all public universities. Seven (7) percent of FSU freshmen identified themselves as Other Latino compared to 2 percent at all public universities [see Figure 2].

Figure 2 Ethnic Composition

Ethnicity	FSU 2003 (%)	FSU 2002 (%)	All Public Univ – National Norm 2003 (%)	All Public Univ – National Norm 2002 (%)
White/Caucasian	81	78	75	78
African American/Black	7	9	7	7
American Indian	< 1	2	1	1
Asian American/Asian	3	3	12	10
Native Hawaiian/Pacific Islander	< 1	< 1	< 1	< 1
Mexican American/Chicano	< 1	< 1	3	3
Puerto Rican	2	2	< 1	< 1
Other Latino	7	7	2	1
Other	3	3	3	3

Percentages may sum to 100.0+ due to respondents marking more than one category and/or rounded decimals.

Religion

Twenty-eight (28) percent of the 2003 FSU freshmen stated they are Roman Catholic; in 2002, 27 percent stated they were Roman Catholic. The distribution for other religions in 2003 is: Baptist (13 percent), Other Christian (11 percent), and Methodist (9 percent). Eighteen (18) percent of the participants indicated no religious preference. This pattern approximates the national norm: Roman Catholic – 27 percent, Baptist – 10 percent, Other Christian – 12 percent, Methodist – 7 percent and 20 percent indicating no religious preference.

Biographical Information

Parent Information

When asked if both parents are alive and living with each other, 69 percent of the FSU respondents indicated yes, while 28 percent responded both parents are alive but divorced or living apart. FSU freshmen have parents that are more likely to be divorced or living apart than the national average of 22 percent [see Figure 3].

Figure 3 Parent Living Arrangements

Are Your Parents:	FSU %	All Public Univ – National Norm %
Living w/each other	69	75
Divorced or living apart	28	22
One or both deceased	3	3

Percentages may sum to 100 + due to respondents marking more than one category and/or rounded decimals.

Entering freshman parents' education levels

Thirty-four (34) percent of FSU respondents' fathers have college degrees while 30 percent of the national norm reported their fathers have college degrees. Twenty-four (24) percent of FSU freshman fathers have graduate degrees compared to 25 percent of the national norm. Thirty-five (35) percent of FSU respondents' mothers have college degrees compared to 34 percent of the national norm. Sixteen (16) percent of FSU respondents' mothers have graduate degrees compared to 18 percent of the national norm [see Figures 4 and 5, respectively].

Figure 4

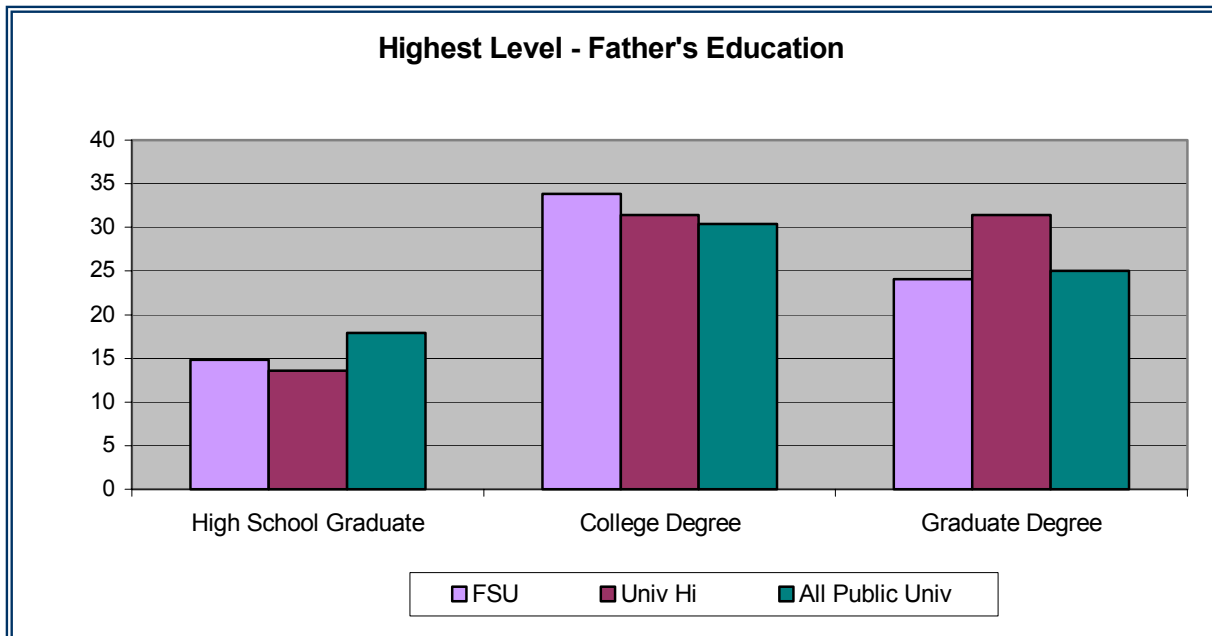
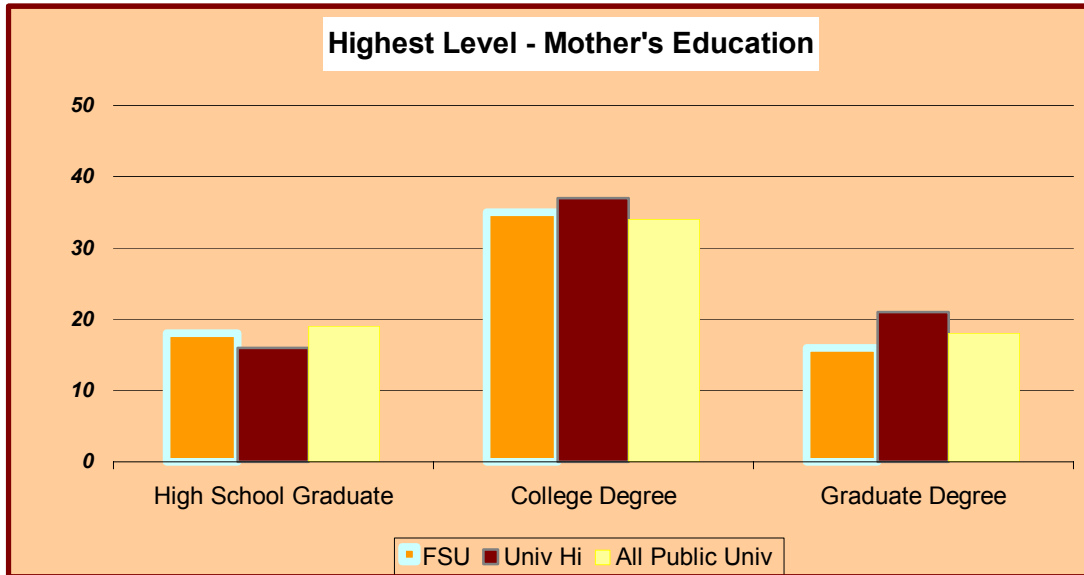


Figure 5



Distance from Home

A higher percentage of FSU freshmen are farther away from their permanent homes than the national norm. The majority (71 percent) of freshmen have permanent homes between 101-500 miles from FSU; nationally, about 41 percent of students claim their permanent homes to be 101-500 miles from the universities they attend. Twenty-one (21) percent of FSU freshmen stated their homes are more than 500 miles from the university compared to 9 percent of the national norm [see Figure 6].

Figure 6 Distance From Home

	Number of Miles	All Public Univ- National Norm (%)
1	< 5	4
2	6-10	5
3	11-50	24
2	51-100	18
71	101-500	41
21	> 500	9

Education and Financial Information

High School Grades

A slightly higher percent of FSU freshmen (97 percent) reported their grade point average in high school as “B” or better than freshmen in the national norm. Nationally, approximately 92 percent of the freshmen at public universities reported their average grade in high school was “B” or better [See Figure 7]. Students also reported there is a good chance they would maintain a “B” or better average throughout college. Additionally, 86 percent of FSU entering freshmen rated themselves as “above average” in academic ability.

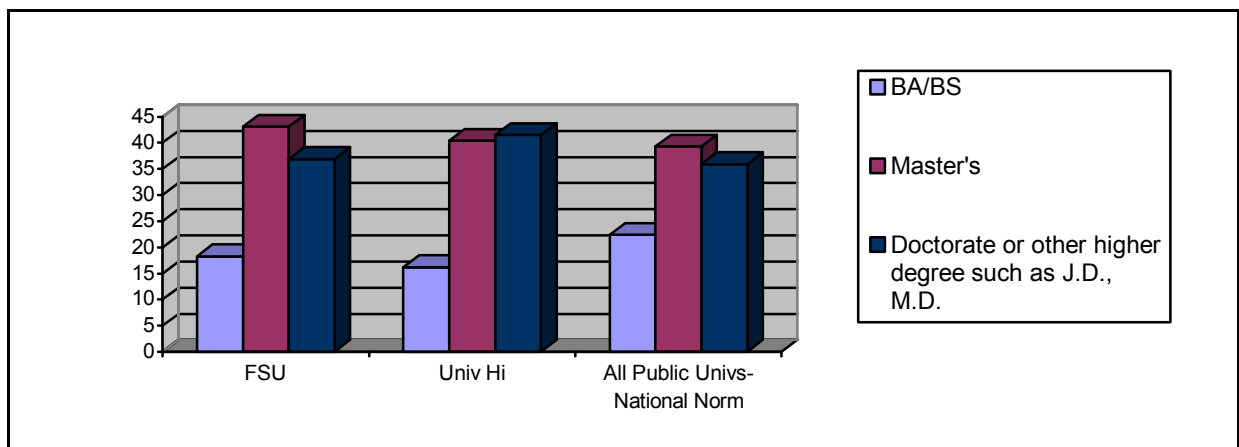
Figure 7 Average Point Grade In High School

Average Grade	FSU (%)	Univ Hi (%)	All Public Univ – National Norm (%)
“B” or better	97	97	92

Degree Aspirations

Forty-three (43) percent of FSU freshmen indicated the highest degree they aspired to obtain at any institution is a Master’s degree, 37 percent indicated a Doctorate degree or other higher degree, and 18 percent indicated a Bachelor’s degree. The national norm shows 39 percent aspired to a Master’s degree, 36 percent indicated a Doctorate degree or other higher degree, and 22 percent indicated a Bachelor’s degree [Figure 8].

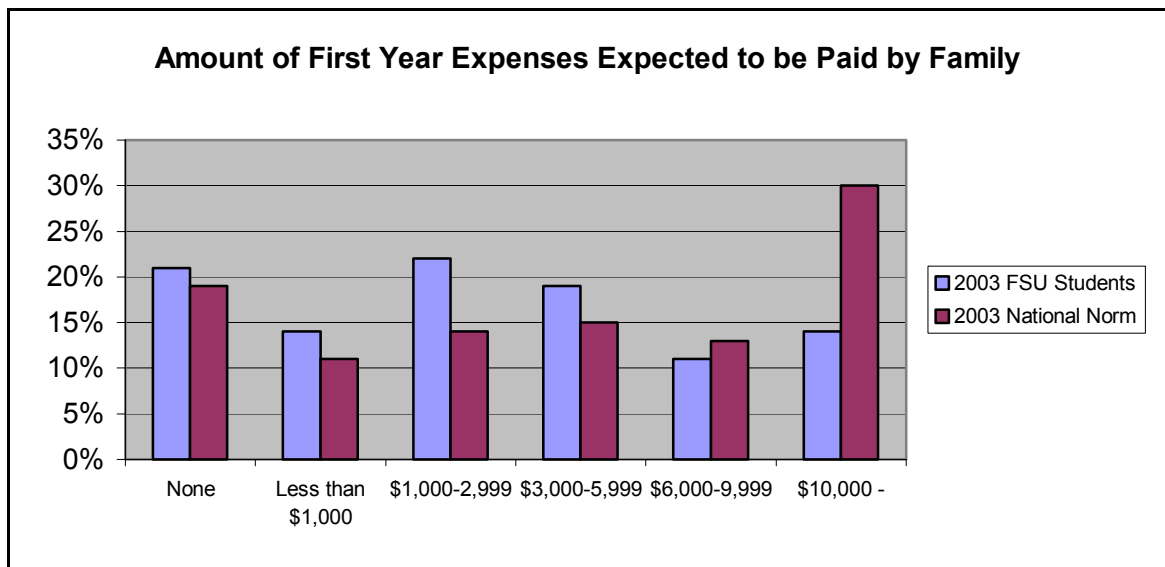
Figure 8 Highest Degree Planned at Any Institution



Financial Assistance

Most FSU freshmen plan to use some family assistance to finance their first year's education. Florida State University students are slightly less likely to rely on family resources to help finance their first year expenses – 21 percent of FSU freshmen reported they would not use any family resources compared to 19 percent of the national norm. FSU freshmen were slightly more likely to rely on family resources in the category of \$3,000-\$5,999 than the national norm; 19 percent of FSU freshmen expected financial assistance from family of between \$3,000 to \$5,999 while only 15 percent of the national norm fell in this range. FSU freshmen are less likely to rely on large amounts - \$10,000 or more—from family resources; 14 percent of FSU freshmen stated they expected financial assistance of \$10,000 or more from family while 30 percent of the national average reported they expected \$10,000 or more from family resources to assist in financing their first year's education [see Figure 9].

Figure 9



Percentages may sum to 100+ due to respondents marking more than one category and/or rounded decimals.

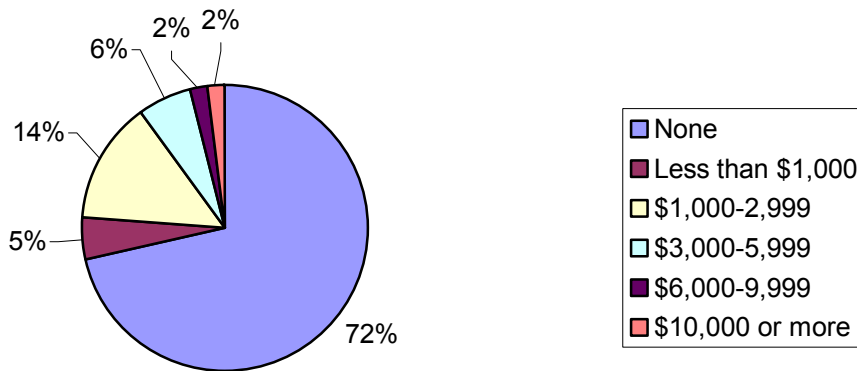
Figure 10A

At the same time, a higher percentage of FSU students (48 percent) responded that they did not intend to use any of their own resources to help finance their first year’s educational expenses, compared to 40 percent in all public universities [see Figure 10A]. The majority of FSU freshmen – 72 percent – also stated that they did not plan to use financial aid that must be repaid to cover their first year expenses [see Figure 10B].

Amount	FSU (%)	All Public Universities-National Norm (%)
None	48	40
< \$1000	29	27
\$1000-2,999	17	22
\$3000-5,999	4	7
\$6000-9999	< 1	2
>\$10,000	<1	1

Figure 10B

Percent of FSU Students that Plan to Borrow Financial Aid to Cover First Year Expenses



Interests and Beliefs

FSU freshmen reported their study patterns and involvement in social activities during their last year of high school. The majority of FSU freshmen (71 percent) reported spending 5 hours or less per week

studying or doing homework while 79 percent reported spending 6 hours or more per week socializing with friends. The majority (57 percent) reported spending one or more hours a week volunteering. As shown in Figure 11, use of a personal computer among entering FSU freshmen exceeded the national norm slightly; 89 percent compared to 87 percent. E-mail is a popular tool used to communicate with parents and friends; 69 percent of FSU freshmen had used e-mail in the last year.

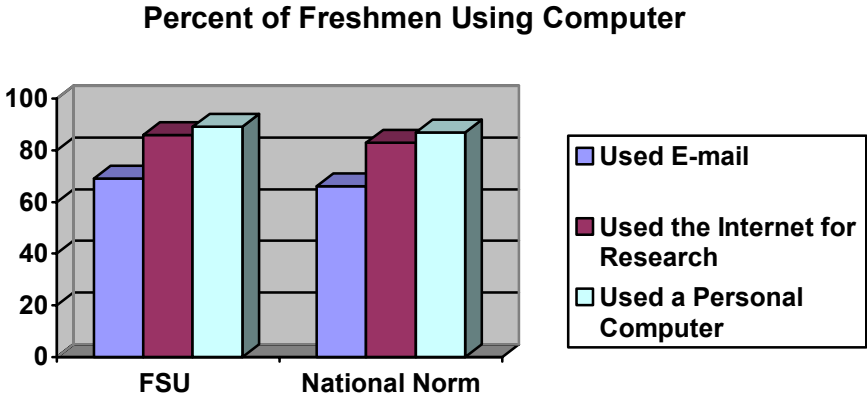
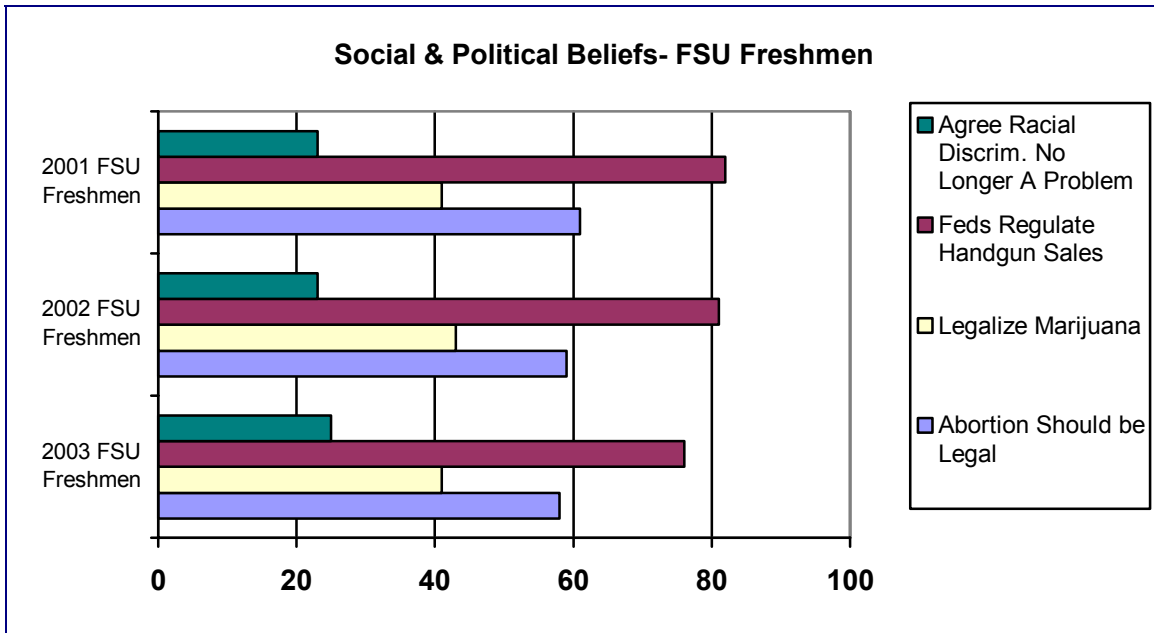


Figure 11

Freshmen also responded to questions about social and political concerns. For example, 58 percent of FSU students felt abortion should be legal; this percent declined slightly from 59 percent last year. This year, 41 percent of FSU freshmen indicated that they thought marijuana should be legalized compared to 43 percent last year. This year, 76 percent thought the federal government should have more control of handguns compared to 81 percent last year. Only 25 percent of FSU freshmen indicated that they thought racial discrimination was no longer a major problem this year; this figure was 23 percent last year [see Figure 12].

Figure 12

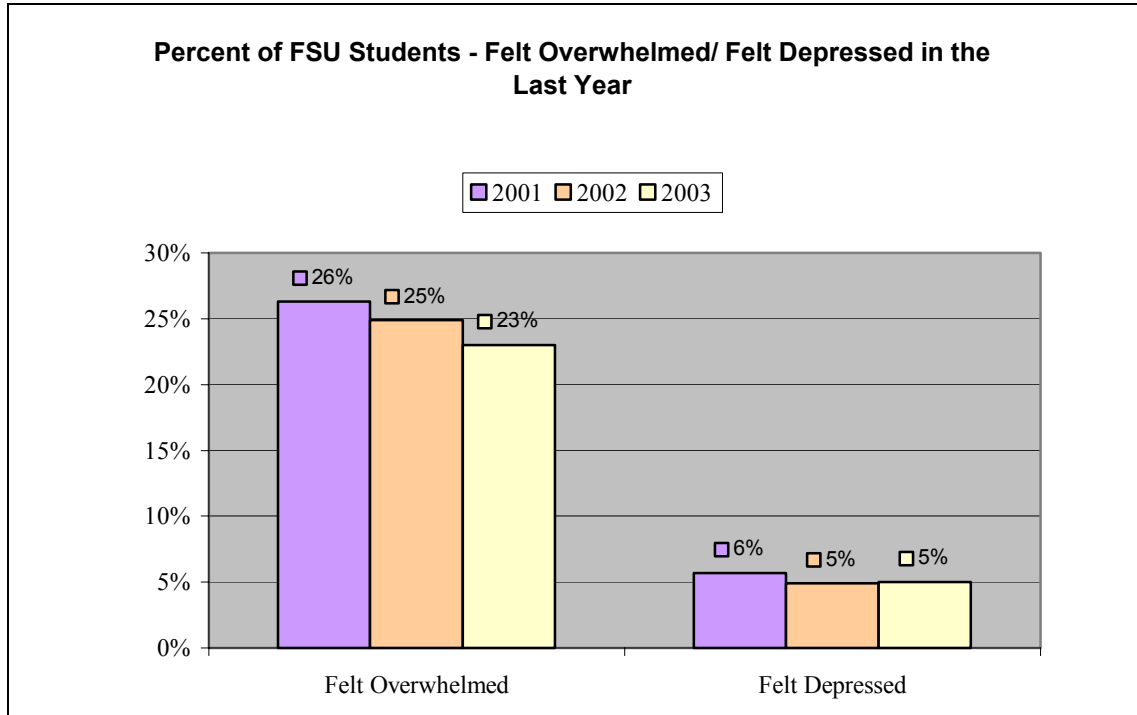


Wellness

Emotional Health

FSU freshmen were less likely to respond that they had felt overwhelmed in the past year than the national norm. When asked *if* they had felt “overwhelmed by all they had to do in the past year”, 23 percent of FSU freshmen responded “yes” as compared to 26 percent of the freshmen at all public universities. Similarly, a smaller percentage of FSU freshmen responded they had felt depressed in the past year - 5 percent of FSU freshmen compared to 7 percent of the general freshman population. FSU freshmen this year are slightly less likely to report that they felt overwhelmed than prior freshman classes; 26 percent of the FSU freshmen in 2001 stated they had felt overwhelmed in the last year compared to 25 percent in 2002 and 23 percent this year. However, the percent reporting depression remained the same - 5 percent of the FSU freshman class in 2003 stated they had felt depressed in the last year compared to 5 percent in 2002 [see Figure 13]. .

Figure 13



We also asked FSU freshmen if they currently take prescription medication for an emotional or learning disorder. The majority of FSU freshmen (91 percent) stated they did not take medications for psychological issues [see Figure 14].

Figure 14

Take Medication for:	Percent (%)
Depression	3
Anxiety and stress	2
Attention deficit disorder/learning disability	3.3
Eating disorder	<1
Do not take medications for psychological reasons	91

Percentages may sum to 100+ due to respondents marking more than one category and/or rounded decimals.

Fitness

The number of hours that 2003 FSU freshmen exercised reflected freshmen nationally. FSU freshmen responses for the number of hours spent during a typical week exercising or playing sports were within 2 percentage points of the answers of freshmen in all public universities. About 21 percent indicated they had spent between 3 to 5 hours in a typical week exercising or playing sports in their last year of high school while 20 percent of freshmen at all public universities had spent that amount of time exercising and/or engaging in sports. Additionally, 20 percent of FSU freshmen indicated they had spent 6 to 10 hours a week in their last year of high school exercising and/or engaging in sports compared to 19 percent of freshmen at all universities. About 12 percent of FSU freshmen affirmed they had spent between 11 to 15 hours a week exercising or playing sports while 14 percent of freshmen at all public universities placed themselves in this category [see Figure 15]. There was little change among 2002 freshmen compared to 2003 freshmen [see Figure 16].

Figure 15 **Number of Hours Spent Exercising or Engaging in Sports
FSU Freshmen Compared to National Norm**

HOURS	FSU 2003 (%)	All Public Universities- National Norm 2003(%)
None	5	5
<1	10	10
1 to 2	16	16
3 to 5	21	20
6 to 10	20	19
11 to 15	12	14
16 to 20	7	8
>20	10	9

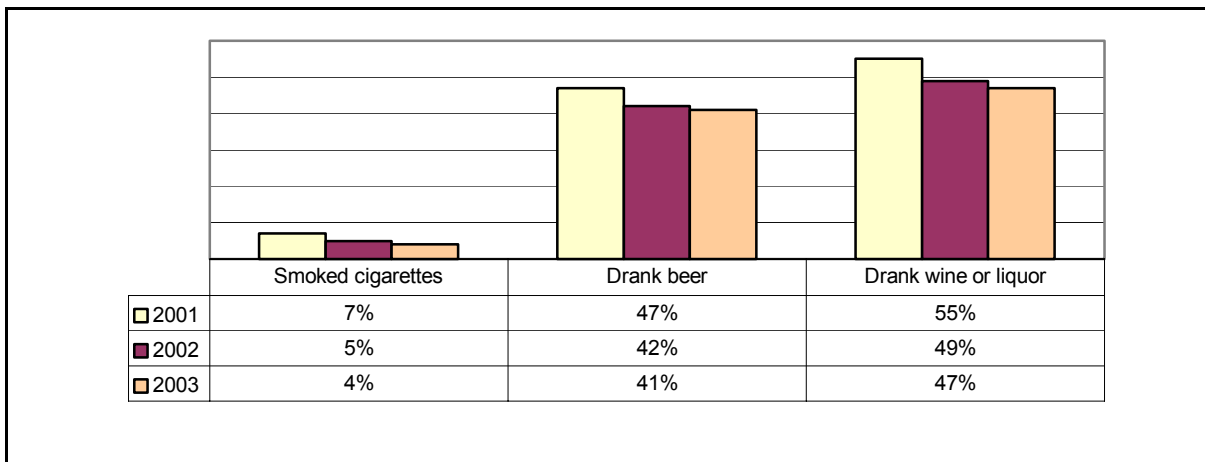
Figure 16 2002 FSU Freshmen Compared to 2003 FSU Freshmen

HOURS	FSU 2002 (%)	FSU 2003 (%)
None	5	5
<1	11	10
1 to 2	17	16
3 to 5	21	21
6 to 10	18	20
11 to 15	13	12
16 to 20	7	7
>20	9	10

Alcohol and Tobacco Use

Figure 17 shows a declining trend in FSU freshmen engaging in certain behaviors such as smoking cigarettes, drinking beer, and drinking wine or liquor compared to prior years. In 2001, 7 percent of students stated that they had used tobacco products while 4 percent responded that they had done so in 2003. Similarly, 47 percent of the students in 2001 responded that they had consumed beer in the last year as compared to 41 percent in 2003. A smaller percentage of students also responded that they had consumed wine or liquor - 55 percent in 2001 compared to 47 percent in 2003.

Figure 17 Alcohol & Tobacco Consumption



Conclusion

The majority (66 percent) of the 2003 FSU freshmen are 18 years of age; this age pattern closely reflects the national norm - 67 percent are 18 years of age. The FSU freshman class is 81 percent White/Caucasian; the national trend is 75 percent White/Caucasian. The FSU freshman class has approximately the same percent of African American/Black freshmen enrolled as the national norm. The predominant religion is Catholicism – 28 percent of FSU freshmen reported they are Catholic. Academically, the majority (97 percent) of FSU freshmen reported a high school grade point average of “B” or better. Exercise and fitness are important activities to FSU freshmen since almost 50 percent of FSU freshmen reported exercising or playing sports 6 hours or more per week in the last year of high school. A declining trend in FSU freshmen engaging in certain behaviors such as smoking cigarettes, drinking beer, and drinking wine or liquor compared to prior years is occurring.